



WATFORD ASSOCIATION FOOTBALL CLUB LIMITED  
VICARAGE ROAD, WATFORD, HERTS.

SEASON 1966-1967

OFFICIAL PROGRAMME

SIXPENCE

**W  
A  
T  
F  
O  
R  
D**

**WATFORD**

**v**

**SWINDON TOWN**

FOOTBALL LEAGUE DIVISION THREE

Saturday, January 14th, 1967

Kick-off 3 p.m.

*Next Match at Vicarage Road*

Tuesday, January 17th, 1967

**SOUTHEND UNITED**

LONDON MID-WEEK LEAGUE

Kick-off 7.30 p.m.



**BE LIKE WATFORD F.C. . . .**

*Get your Sports Equipment from the Specialists . . .*

## **PETER SPIVEY LTD.**

**83A The Parade, Watford. Tel. 26550**

**and at**

**71 Marlowes, Hemel Hempstead. Tel. 56760**

## **E. E. BEAUMONT & SON**

*(Established 1763)*

**Motor Body Repair Specialists**

**27 HIGH STREET, PINNER, MIDDLESEX**

**Telephone: PINner 0730**

## **BUSHEY MILL SERVICE STATION**

**BUSHEY MILL LANE, BUSHEY, HERTS. Watford 20300**

**SHELLUBRICATION PETROL ACCESSORIES REPAIRS**

## **RED LION GARAGE**

**VICARAGE ROAD, WATFORD, HERTS**

**Proprietor: Stanley G. Allison**

**Watford 31968**

## **BRIDGEWATER FOR GLASS**

**ALL TYPES OF GLASS CUT WHILE YOU WAIT**

**Safety Glass : Table Tops : Curved Screens**  
**Leaded Lights : Mirrors : Mirrors Re-Silvered**

**46 VICARAGE ROAD, WATFORD Tel: 36162, 20339 and 43096**

**Tel. WATFORD 25107**

## **CROXLEY BUILDING**

## **SUPPLIES LTD.**

**Builders Merchants**

**Bricks, Cement, Lime, Plasters, Dampcourse,  
Tiles, etc.—Concrete Spurs, Coal Bunkers,  
Paving Slabs—Roofing Felt, Snowcem, etc.**

**SUPPLIED IN ANY QUANTITY**

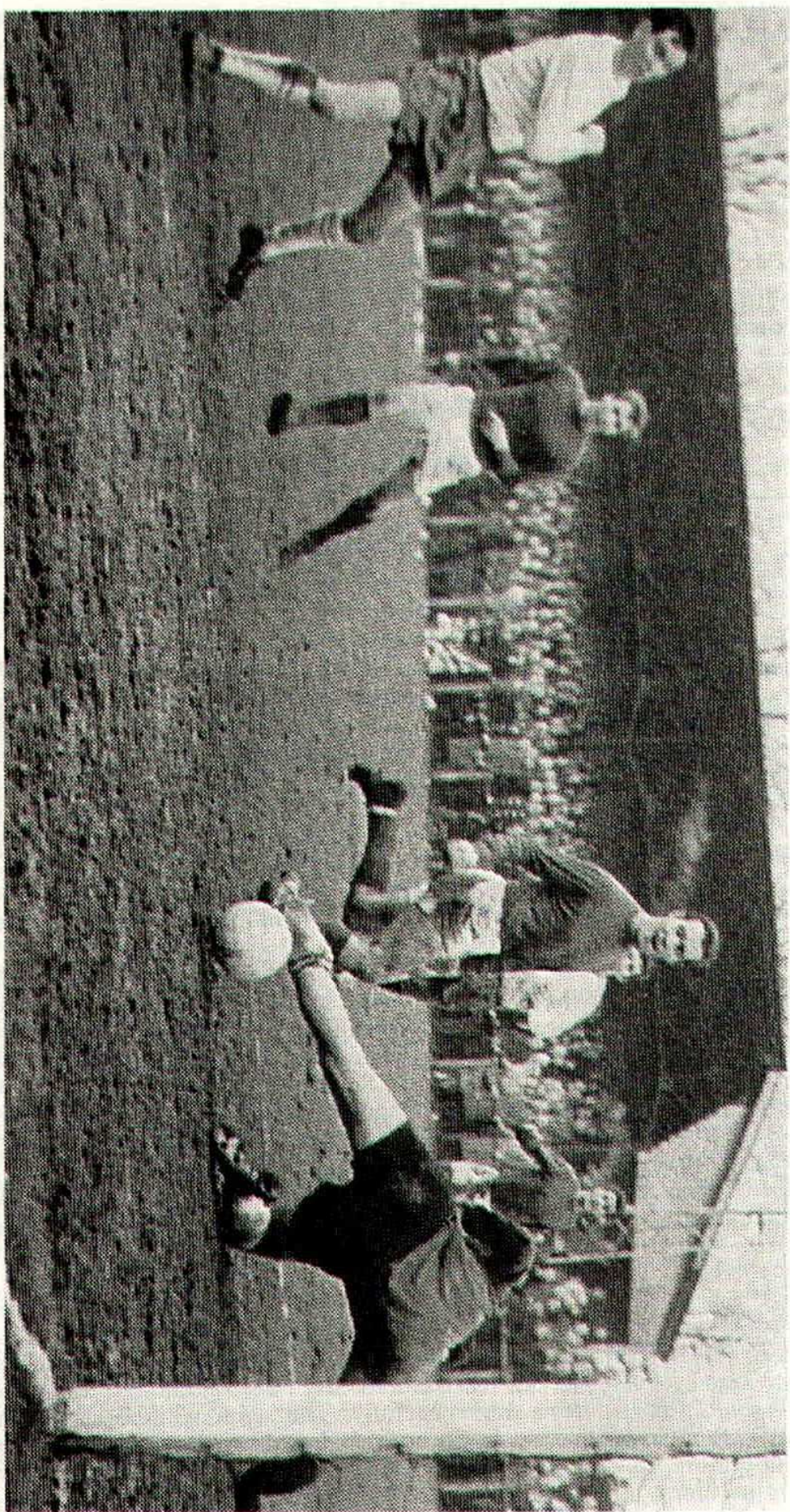
**Showrooms adjoining Met. Station  
(Kitchen Units, Sanitary Ware, Paints, etc.)**

**RICKMANSWORTH 75887**

**MET & L.N.E. STATION, CROXLEY GREEN, HERTS**



## ENFIELD v WATFORD



**Alec Farrall scores Watford's last goal, converting a pass from Terry Melling. The goal, Farrall's second of the match, gave Watford their highest score in a competitive match this season.**

*Graphic Photo*



# WATFORD ASSOCIATION FOOTBALL CLUB LIMITED

Founded 1891

Registered Offices: VICARAGE ROAD GROUND, WATFORD. Telephone: Watford 21759.

## Directors:

J. BONSER, Chairman. A. A. WHITE, Vice-Chairman.  
D. N. BROAD, W. M. GRAVER, J. HARROWELL, D. F. LINDSEY, J.P., C.C.,  
C. W. WHITE.

Hon. Medical Officer: DR. V. A. EDWARDS. Hon. Treasurer: C. G. LAYLEY.

President: HIS WORSHIP THE MAYOR  
(Alderman Finlay Mackenzie, J.P.)

## Vice-Presidents:

E. C. AMEY, F. H. T. BOSHER, D. G. CLAY, H. CONSTANTINE, E. EDMONDS, F. GEARY,  
F. G. GIBBS, L. GOODALL, A. HALL, MRS. A. B. HEADY, W. HEAP, F. JONES, R. S. F. KIRK,  
J. D. MORGAN, H. MUIR STRATFORD, P. G. WELFAIR, L. G. WHITE, F. WITHEY.

Player-Manager: K. FURPHY. Secretary: R. E. ROLLITT. Trainer: G. AITKEN.  
Physiotherapist: P. MOLLOY.

---

SERIAL No. 14

---

## Voice of Watford

THIS afternoon we would like to extend a very warm welcome to officials, players and supporters of Swindon Town F.C. The "Railwaymen" have to date enjoyed a mixed season, making a bad start but in recent weeks have improved considerably. There is plenty of talent in their side and most observers, with that in view, would have tipped them for promotion this season. In their ranks today, subject to no injuries in their mid-week cup-tie with Ashford, will be such players as Mel Nurse, their expensive centre-half signing from Middlesbrough, Willie Penman, the five-figure signing from Newcastle United, and the player many league clubs would like to sign, Don Rogers, the winger, not forgetting Dennis Brown, their goal-scoring inside forward from Chelsea. They are managed by Danny Williams, the former Rotherham United manager.

Well, we return to Vicarage Road after an extremely hard battle at Loftus Road against Q.P.R., which must have delighted all the spectators. Whilst, obviously, we were not pleased with the result which, in our view, was a little harsh, we felt we played well—and this was confirmed by Sir Alfred Ramsey, an interested spectator. Last Saturday we journeyed to Enfield to meet the strong amateur club, and we had to fight every inch of the way to pull through. On this form Enfield should be a strong tip to win the Amateur Cup. Manager Ken Furphy, who suffered with a very heavy cold during the week, had ear trouble on the Friday before the match, but though he was not 100 per cent fit, turned out. It was most gratifying to see such a strong contingent of Watford supporters who made themselves heard. Thank you all. The team appreciated your efforts.

What a draw—LIVERPOOL at home! We could not have wished for a better draw even if we had pulled our opponents out of the hat ourselves. A side full of internationals and personalities. Our boys readily accept the challenge and supporters can rest assured that "deep-thinking" Manager Ken Furphy will plan this one very carefully. The team will be staying at the Lilleshall Recreation Centre, in Shropshire, for a few days prior to the game.

Supporters will have no doubt noted that in our Reserve side we are playing as many as five or six colts. This policy is to give these youngsters as much experience as possible in Reserve team football. Similarly, several



changes have been made in the South-Eastern Counties side. Those players, in Manager Furphy's view, that will not make the grade have been released and several promising youngsters of 16 years of age have been brought into the side. The immediate effect may be some adverse results, but taking a long-term view must pay dividends in the long run.

We hear that two of our old players, Freddy Bunce and David Pygall, have returned from South Africa and are at present in Watford. Freddy Bunce, we believe, would like to return to English football, but we understand there is a fee on his head.

Today sees the beginning of our new article "The supporters that make the Watford Football Club." This article features Mr. Jim Mitchell. Our next article will feature Mr. Jack Sheppard.

### **F.A. CUP 3rd ROUND—LIVERPOOL SATURDAY, 28th JANUARY, 1967**

**Kick-off 3 p.m.**

One ground ticket, priced 6s. adults or 3s. children, will be available to all spectators attending today's match.

Tickets priced 8s. each for the Grand Stand enclosure and for the Shrodells Stand enclosure will be available next week.

Stand tickets will be on sale on Sunday, January 22, from 9.30 a.m. Prices are:—

**Centre Stand 12s.**

**Shrodells Stand 10s.**

**Wing Stand 8s.**

Tickets will be limited to one each.

Season ticket holders should make application for their usual seats by Wednesday, January 18, and if applying by post should send the appropriate remittance and a stamped, addressed envelope.

## **THE SUPPORTERS WHO MAKE THE WATFORD FOOTBALL CLUB**

James Mitchell, aged 49, lives at 41 Broomfield Rise, Abbots Langley. He works as a welder with British Railways stationed at Watford Junction. Has supported the club since 1946 immediately after he was demobbed from the Army. He is married, and his wife Dorothy invariably travels with him. His daughter, Barbara, and son Jim are both very keen supporters. Since 1946 he has not missed a home game and during the last six seasons has not missed an away game. A typical itinerary for Jim was in season 1961-2. He went to work on Friday evening, on the Saturday he travelled to Bradford to see the club in a Division 4 game. He returned to Watford after the game to commence a night shift. Sunday was a day off until the evening, when he again did a night shift. On Monday he set out for York in appalling weather to see the Hornets' League Cup match.

In his view the best performance by a Watford side was the 1-0 Cup replay win against Southampton (1959-60 season). His favourite player was Cliff Holton and in his own words, "One always expected fireworks when Cliff was near goal." Considers the present side under Manager Ken Furphy is the best team effort he has seen—"They are all trying to help one another. I feel confident that Ken Furphy will get us into Division 2." His one disappointment is the support given to the club this season. "The boys have played attractive football and deserve far better support. Suddenly, because we have drawn Liverpool in the Cup some 'supporters' who have not been near Vicarage Road for years want to come. We need supporters who will come through 'thick and thin'."



**James Mitchell**

**WATCH FOR OUR NEXT ARTICLE ON JANUARY 28th.**



# NEWS FROM THE WATFORD FOOTBALL CLUB SUPPORTERS CLUB

**G**OOD afternoon to you all, and it's back to the struggle for league points with a visit from our friends from Swindon. We welcome their many supporters to Vicarage Road and hope that they will all come along and see us at our clubhouse.

Well, what an exciting F.A. Cup-tie we can look forward to on January 28. The visit of the current league champions, who are again topping Division 1, should mean a sell-out for us. It has certainly livened up football interest in the town and only good can come of this.

Talking of sell-outs, our pre-Christmas Social at Club Headquarters fell into this category, and our thanks to all who came along to make this a success. We know that all present enjoyed themselves and a further social evening such as this has been lined up for you—watch these notes for details.

This will be your last chance before the cup-tie to obtain your club favours, so call in at one of Bill Gough's shops today and his staff will be able to meet your needs.

Remember, too, that we have an important fixture at Reading next Saturday and our usual excellent coach service will be in operation. Book your seats before or after the game.

This afternoon will also be an excellent opportunity to practise your cup-tie "roar"—get it going early and we shall have a repeat of the result obtained at Swindon earlier in the season and two more points for our promotion bid.

## ***WHY QUEUE!***

### **BUY A SEASON TICKET (AT REDUCED PRICES)**

*Call in at the SECRETARY'S OFFICE  
after the game*

<b>CENTRE STAND</b> .....	<b>£6.10.0</b>
<b>SHRODELLS STAND</b> .....	<b>£5. 5.0</b>
<b>WING STANDS</b> .....	<b>£4. 5.0</b>
<b>GROUND</b> .....	<b>£2.15.0</b>
<b>„ CHILD</b> .....	<b>£1. 7.6</b>



# Welcome to our Visitors

## SWINDON TOWN

**Tony Hicks** (Goalkeeper). Born Swindon. He has been with Swindon for five years. He joined the Club as a schoolboy and progressed through the ranks of the junior teams before becoming one of the three senior goalkeepers.

**John Trollope** (Left-back). Born Swindon. Another local player who joined the Swindon ground staff from school. Was selected for the first team at the beginning of the 1960/61 season when he was just 16 years old, and was ever present during that season. A strong player who has proved his worth in a good defence.

**Mel Nurse** (Centre-half). Signed from Middlesbrough at the beginning of last season. He is a strong, forceful player and is an International for Wales. His ability and experience has done much to strengthen the team's defence.

**Stan Harland** (Left-half). Born Liverpool. Signed during close season from Carlisle United. He is a forceful player and is able to go forward to back up the forwards in attack.

**Eric Weaver** (Outside-right). Born Rhymney. Joined the Club from Southern League Trowbridge Town after his service with the R.A.F. He played Representative football in the services, and since becoming a professional with Swindon he has proved his worth, being able to play in most positions in the forward line.

**Roger Smart** (Inside-right). Born Swindon. Another local-born player who joined the Club direct from Swindon Schoolboys team. At 17 he was appearing regularly at centre-forward in the reserve team, but he excels as a deep-lying inside-forward or wing-half.

**Dennis Brown** (Inside-left). Born Reading. Joined the Club from Chelsea for a very large fee in November 1964. A fast inside-forward with a deadly shot.

**Donald Rogers** (Outside-left). Born Paulton. A player of outstanding ability. He has long been the target for many of the English First Division Clubs. He has played for England Youth Team and also the England under-23 XI.

**Joe Butler** (Full-back). Born Newcastle. Joined Swindon from Newcastle United in August, 1965. A tenacious player whose speed and ability amply makes up for his lack of inches. He joined the Club's Junior Team and graduated to the senior ranks before joining the Town.

**Rod Thomas** (Full-back). Born Glyn-corrwg. A former youth player with the Club, whose speed and strength has made him a reliable defender. Made his debut in the first team last season.

**Bruce Walker** (Outside-left). Born Westwood Lay. Joined Swindon from County football. Though he is not a big player his ability and speed makes him a menace to any defence.

**Willie Penman** (Centre - forward). Signed from Newcastle United in September 1966.

**Jimmy Lawton** (Centre-forward). Born Middlesbrough. When Swindon played Darlington in the Football League Cup last season Lawton was one of the outstanding players in the Darlington team. As a result of his performance Swindon immediately signed this player. A strong forceful leader. He scored 28 goals in the Darlington first team in season 1964/65.

# HODSONS

## Furnishing Fabrics

### KING STREET, WATFORD



# **PRATT (WATFORD) LTD.**

Incorporating Standard Range & Foundry Co. Ltd.

**BUILDERS' MERCHANTS and CONTRACTING SPECIALISTS FOR**

**ROOFING  
ASBESTOS CLADDING**

**DEXION  
ACOUSTIC CEILINGS**

**STAR HOUSE, CLARENDON ROAD, WATFORD - TEL. WATFORD 26411**

GARSTON 4727

## **JAMES COMPTON**

**ELECTRICAL ENGINEER AND CONTRACTOR**

**149 MOUNT PLEASANT LANE  
BRICKET WOOD**

**WATFORD CIVIC THEATRE TRUST LTD.**

## ***PALACE THEATRE***

**THE WATFORD CIVIC THEATRE TRUST LIMITED**  
presents the company in

### ***"CINDERELLA"***

**RUNNING UNTIL JANUARY 21st 1967**

**TIMES:** December 26th, 2 p.m., 5 p.m. and 8 p.m.; December 27th, 28th and 29th, 2.30 p.m. and 5.30 p.m.; December 30th and 31st, 2.30 p.m. and 7.30 p.m.; January 2nd, 3rd, 4th and 5th, 2.30 p.m. and 5.30 p.m.; January 6th and 7th, 2.30 p.m. and 7.30 p.m.; January 9th, 2.30 p.m. and 5.30 p.m.; January 10th, 11th, 12th, 13th and 14th, 2.30 p.m. and 7.30 p.m.; January 16th and 17th, 7.30 p.m.; January 18th, 19th and 21st, 2.30 p.m. and 7.30 p.m.; January 20th, 7.30 p.m.  
**PRICES:** Stalls 6/-, 7/6, 8/6; Circle 7/6, 8/6. Boxing Day 8/6, 9/6, 10/6. Circle 9/6, 10/6. Gallery (unreserved) 3/6. Old-Age Pensioners half price from 10th January.

Telephone WATFORD 25625

## **WEBB'S SPARE PARTS (Watford) LIMITED**

Specialists in old cars from 1932 on

**Tyres, Batteries, Battery Chargers, Heaters, Etc., on Terms**

Call, write or 'phone for details. General Engine and Chassis Spares

**36 VICARAGE ROAD, WATFORD, HERTS**

# **UAM** products serve the **Building Industry**

**THE UNIVERSAL ASBESTOS MANUFACTURING CO. LTD.**

**UAM HOUSE, EXCHANGE RD., WATFORD, HERTS.**



THE  
PAPER  
KEN  
FURPHY  
WRITES  
FOR

# WATFORD POST

FIRST  
WITH  
REPORTS  
COMMENT  
AND  
PICTURES

*Don't be late for the match—  
get a watch from*

**JACKSON**

(from B. S. Morse)

"Watford's oldest jewellers  
now in fourth generation."

**24 HIGH STREET  
WATFORD**

WATFORD 32449

## WATFORD

Yellow shirts, black shorts

1. BERT SLATER
2. KEN FURPHY
3. JOHN WILLIAMS
4. DUNCAN WELBOURNE
5. BRIAN GARVEY
6. KEITH EDDY
7. STEWART SCULLION
8. DENNIS BOND
9. TERRY GARBETT
10. TERRY MELLING
11. ALEC FARRALL
12. MIKE BLOCK

Referee:

J. FINNEY (Hereford).

Ball donor:

In memory of Dr Bob.

## SWINDON TOWN

Red shirts, white shorts

1. TONY HICKS
2. ROD THOMAS
3. JOHN TROLLOPE
4. ROGER SMART
5. MEL NURSE
6. STAN HARLAND
7. DONALD ROGERS
8. DENNIS BROWN
9. WILLIE PENMAN
10. JOE BUTLER
11. BRUCE WALKER
12. ERIC WEAVER

Linesmen:

E. F. M. MERCHANT (Colchester).  
(Red Flag)

P. R. PARSONS (Cheltenham).  
(Yellow Flag)

**BIGGEST SALE — MOST READ  
WATFORD OBSERVER**  
FOR FOOTBALL NEWS AND PICTURES  
THE PAPER WITH THE INDEPENDENT VIEW



**WATFORD POOLS AND DEVELOPMENT ASSOCIATION**

**£805**

**WEEKLY IN PRIZES**

**DAILY LUCKY NUMBERS — 3 HIGHEST SCORES**

**ADDITIONAL MONTHLY GIFTS**

*AGENTS REQUIRED TO SELL THIS  
EASILY SOLD TICKET*

**GOOD INCENTIVES TO AGENTS**

**APPLY FOR AGENCY — POOLS OFFICE  
WATFORD FOOTBALL CLUB**

**GADE HOUSE**



**14 HIGH ST. WATFORD**

**WATFORD  
22371**

**WATFORD'S BRIGHTEST DEPARTMENT STORE**

**MEN'S WEAR & TAILORING DEPARTMENT ● FIRST FLOOR  
WATFORD & HARROW CO-OPERATIVE SOCIETY LTD.**

**OVER 100  
DEPARTMENTS  
AT YOUR SERVICE**

Open all day  
Wednesdays.  
Late Night Shopping  
Fridays.

**LYNWOOD JOINERY  
WORKS LTD.**

**For JOINERY and  
BUILDERS' PLANT**

— Stockists of all standard doors —  
Office and Works:

**L.M.S. Goods Yard, Croxley Green**

**Tel. WATFORD 32152/41659**

Interesting work in all departments  
in pleasant surroundings at

**WATFORD ELECTRIC  
& MFG. CO. LTD.**

(Whippendell Road)

Call and see us, or telephone

**WATFORD 28201**



## MEET THE PLAYERS (13)

### Sandy Pate

Sandy was "spotted" for Watford whilst playing for Renfrew Juniors in Scotland. He signed professional forms for the club in February, 1965. Most of his appearances have been in the reserve team, mainly at wing half. At 17 years of age he won a medal with Anniesland Waverley when they won the Scottish Juvenile Cup, and whilst he was with Renfrew he captained the Scottish Junior Amateur side. Sandy is keen on badminton and devotes much of his spare time to his duties as an officer in the Boys' Brigade.



## BEAT-THE-CLOCK JACKPOT

Tickets available from sellers on and around the ground

**Price 1/- each**



## JOHN F. COLMAN

BESPOKE TAILOR

Wedding orders a speciality  
Has now moved to larger premises

**80 High Street, Watford**

First Floor—over Ryman's Stationers  
(opposite Cawdells Store)

Tel. Watford 25700

Specialist in Made-to-  
Measure Clothes  
High-grade Cloths—Best  
and Latest Designs  
And  
Tailored Alterations and  
Repairs  
Dress-wear Hire  
Valet Service

## NORMAN REEVES (Motors) LTD.

MAIN **FORD** DEALERS

Kick off on the Right Foot with **FORD**

**182 HIGH STREET, WATFORD**

Tel. 21227

also at UXBRIDGE, HIGH WYCOMBE, SLOUGH

## LAST WEEK'S MATCHES

**Saturday, January 7. F.A. Cup, 2nd. Round. Enfield (away). Won 4-2.**

Slater, Furphy, Williams, Welbourne, Garvey, Eddy,  
Scullion, Bond, Garbett, Melling, Farrall. Scorers:  
Farrall (2), Melling and Garbett.

**South-East Counties League. Ipswich (home). Lost 1-5.**

Ryan, Thomas, Packer, Cross, Hotchkiss, Cooper,  
Lesage, Currie, Sullivan, O'Neill, Bennett. Scorer:  
O'Neill.

## HALF-TIME SCORE INDICATOR

<b>A</b> Arsenal v Manchester City .....	<b>N</b> Derby Co v Northampton .....
<b>B</b> Aston Villa v Blackpool .....	<b>O</b> Huddersfield v Bolton .....
<b>C</b> Burnley v Newcastle .....	<b>P</b> Ipswich v Bristol City .....
<b>D</b> Everton v Sheffield United .....	<b>Q</b> Preston v Portsmouth .....
<b>E</b> Fulham v West Bromwich .....	<b>R</b> Rotherham v Hull City .....
<b>F</b> Man United v Tottenham .....	<b>S</b> Wolves v Carlisle .....
<b>G</b> Sheffield Wed v Liverpool .....	<b>T</b> Brighton v Mansfield .....
<b>H</b> Southampton v Leicester .....	<b>U</b> Bristol Rovers v Colchester .....
<b>I</b> Nottm Forest v Leeds Utd .....	<b>V</b> Gillingham v Leyton Orient .....
<b>J</b> Sunderland v Chelsea .....	<b>W</b> Oxford Utd v Shrewsbury .....
<b>K</b> West Ham v Stoke City .....	<b>X</b> Peterborough v Walsall .....
<b>L</b> Cardiff v Blackburn .....	<b>Y</b> Torquay v Grimsby .....
<b>M</b> Crystal Palace v Charlton .....	<b>Z</b> Workington v Bournemouth .....



# LEAGUE TABLES, 1966-1967

## DIVISION III

(Up to and including 10th January, 1966)

	P	W	D	L	F	A	W	D	L	F	A	Pts
Q.P.R.	24	11	1	1	44	11	4	6	1	24	13	37
Mansfield	25	8	2	3	31	24	6	3	3	23	10	33
Bristol R.	27	9	4	1	31	18	4	3	6	18	24	33
WATFORD	24	9	1	2	18	5	3	5	4	15	16	30
Oldham	25	9	2	1	36	9	3	3	7	18	26	29
Gillingham	25	6	5	1	19	8	3	4	6	14	25	27
Walsall	23	10	2	1	24	7	2	1	7	12	30	27
Reading	25	7	4	2	26	12	4	0	8	14	22	26
Shrewsbury	25	8	3	2	26	16	2	3	7	16	23	26
Torquay†	26	8	3	1	29	9	2	2	10	11	24	25
Middlesbro*	24	7	1	3	25	10	3	4	6	23	31	25
Grimsby	24	9	2	1	30	9	2	1	9	9	28	25
Colchester†	24	8	1	3	30	18	2	4	6	15	25	25
Peterborough	24	5	4	3	24	18	2	5	5	17	22	23
Bournemouth	24	5	3	4	14	17	3	4	5	9	16	23
Swindon	23	6	3	2	31	12	2	3	7	13	22	22
Brighton	24	6	4	3	22	15	2	2	7	9	18	22
Doncaster†	24	8	2	2	27	22	1	2	9	9	39	22
Scunthorpe	25	5	3	4	15	14	3	2	8	12	29	21
Darlington†	26	5	2	6	13	18	3	1	9	10	33	19
Oxford Utd.	24	3	5	4	20	17	2	3	7	7	15	18
Swansea	25	3	6	3	23	17	1	3	9	21	41	17
Leyton O.*	23	3	5	3	15	15	1	4	7	13	26	17
Workington	23	4	2	5	22	19	1	2	9	8	28	14

† Promoted teams.

\* Relegated teams.

## THE LONDON MID-WEEK LEAGUE

(Up to and including Friday, 6th January, 1967)

	P	W	D	L	F	A	Pts
Millwall	14	10	2	2	38	17	22
Charlton Athletic	14	9	3	2	40	17	21
Q.P.R.	12	8	2	2	37	16	18
Colchester Utd.	12	6	3	3	20	22	15
Southend Utd.	12	5	2	5	30	21	12
WATFORD	13	4	2	7	22	29	10
Aldershot	10	3	1	6	19	30	7
Leyton Orient	12	2	1	9	11	29	5
Luton Town	13	1	0	12	12	48	2

## SOUTH-EAST COUNTIES LEAGUE

### Senior Section

(Up to and including 7th January, 1967)

	P	W	D	L	F	A	Pts
Ipswich	19	12	4	3	43	23	28
Chelsea	18	12	3	3	62	28	27
Charlton Athletic	17	11	4	2	47	22	26
Millwall	16	10	2	4	31	20	22
Fulham	17	8	4	5	33	32	20
WATFORD	18	6	6	6	43	39	18
West Ham	18	8	2	8	33	35	18
Crystal Palace	18	7	3	8	40	35	17
Q.P.R.	15	7	2	6	33	25	16
Tottenham	16	6	4	6	32	24	16
Leyton Orient	15	6	3	6	21	22	15
Brentford	17	6	2	9	27	44	14
Bexley Utd.	14	4	3	7	36	43	11
Arsenal	19	4	1	14	23	47	9
Brighton	18	3	2	13	24	56	8
Luton Town	17	3	1	13	29	62	7

# ROLL CALL 1966-1967

(Up to and including 7th January, 1967)

FIRST TEAM				RESERVE TEAM				JUNIOR TEAM			
Appearances		Goals		Appearances		Goals		Appearances		Goals	
L	C	L	C								
Block	7	0	2	0	Anderson	1	0	Anderson	15	6	
Bond	24	2	7	0	Baigent	8	0	Baigent	3	0	
Eddy	24	2	0	0	Bennell	1	0	Bennell	4	0	
Farrall	22	2	3	3	Block	5	2	Clarey	1	0	
Furphy	22	2	0	0	Clarke	3	1	Cooper	15	0	
Garbett	21	2	9	1	Cowen	13	0	Cross	17	0	
Garvey	24	2	0	0	Cross	2	0	Currie	16	13	
Jones	3	0	0	0	Currie	9	1	Denham	1	0	
McAenearney	1	0	0	0	Farrall	1	1	Featherstone	7	2	
Melling	18	2	4	1	Featherstone	2	1	Harper	5	1	
Owen	8	0	1	0	Furie	13	0	Hill	2	0	
Scullion	19	2	4	0	Hotchkiss	1	0	Hotchkiss	15	0	
Slater	24	2	0	0	Jones	5	0	Johnstone	1	0	
Smith	1	0	0	0	Lomas	13	3	Jones	1	0	
Welbourne	24	2	3	0	McAenearney	3	0	Lesage	8	1	
Williams, A.	2	0	0	0	Melling	3	4	Mead	2	0	
Williams, J.	20	2	0	0	O'Neill	11	1	Mulford	12	0	
					Owen	9	2	O'Neill	17	6	
					Packer	6	0	Packer	17	0	
					Pate	13	1	Pain	1	0	
					Scullion	3	1	Ryan	2	0	
					Smith	11	3	Ryder	14	11	
					Thomas	1	0	Sullivan	1	0	
					Williams, A.	6	1	Thomas	13	0	
								Wade	2	0	
								Whickham	2	0	
								White	4	1	
								Own Goal	0	2	



**F. W. WITHEY**  
LIMITED

**62 Harwoods Road, Watford**

BUILDERS AND DECORATORS

Sanitary and H.W. Engineers

Heating and Small-bore  
Engineers

●  
**ALTERATIONS A SPECIALITY**  
●

Estimates Free

Tel. 25781

**DAVIES**

**93 Vicarage Road, Watford**

Telephone: WATFORD 31271

Newsagent to the Club

●  
**FAMOUS FOR  
GREETINGS CARDS**  
●

Newsagents  
Stationers

— Confectioners  
— Tobacconists  
●  
Toys

**STANMORE SUPPLIES LIMITED**

**1 CANONS CORNER, EDGWARE**

**STONEGROVE 5254**

**12 BUCKINGHAM PARADE, STANMORE**

**GRIMSDYKE 5052**

T.V. SALES AND RENTALS, WASHING MACHINES,  
CLEANERS, REFRIGERATORS, COOKERS

Prompt Hoover Service in the Watford area; 'phone for immediate attention.

**Arthur Grimsdell**

TOBACCONIST

STATIONER

NEWSAGENT

TOYS

**54 Vicarage Road, Watford**

TELEPHONE WATFORD 22648

**E. N. MOLE & CO. LTD.**

Plumbers and Heating Engineers

Decorators and Paperhangers

**3 TOLPITS LANE, WATFORD**

Repairs of all kinds—Estimates free

**BIKES FOR EVERYONE AT:**

**THIRTEENS CYCLE DEPOT LTD.**

**73 CHALK HILL, OXHEY, WATFORD Tel. Watford 34221**

For **HOLDSWORTH, CARLTON, CLAUD BUTLER, DAWES, ELSWICK, GRUBB, HERCULES, PHILLIPS, RALEIGH, SUN, TRIUMPH, FALCON, VIKING, ROYAL ENFIELD, MACLEANS and MOULTON CYCLES**

CELLA and STORMCHEETAH RAINWEAR  
All accessories

CARRADICE BAGS  
Same-day repair service

Derailleur gear specialists  
Official C.T.C. repairers

Wheel building a speciality  
Member National Association Cycle Traders



# FIXTURE LIST, 1966-1967

## 1st Team—FOOTBALL LEAGUE, DIV. III

Aug. 1966				F	A
Sat.	20	Darlington	Away	0—1	9,342
Sat.	27	Q.P.R.	Home	1—0	9,957
Sept.					
Sat.	3	Colchester U.	Away	1—2	4,232
Tues.	6	Shrewsbury T.	Home	1—0	5,474
Sat.	10	Swindon T.	Away	2—1	9,999
Sat.	17	Reading	Home	1—0	6,615
Fri.	23	Doncaster R.	Away	0—0	13,040
Mon.	26	Shrewsbury T.	Away	1—1	4,774
Oct.					
Sat.	1	Mansfield T.	Home	0—1	5,219
Sat.	8	Middlesbro.	Home	2—0	6,677
Sat.	15	Swansea T.	Away	2—2	5,843
Mon.	17	Peterborough	Away	2—2	7,402
Sat.	22	Bournemouth	Home	3—0	7,718
Sat.	29	Leyton Orient	Away	1—1	5,741
Nov.					
Sat.	5	Gillingham	Home	1—1	5,874
Sat.	12	Workington	Away	2—1	1,947
Tues.	15	Peterborough	Home	3—1	6,080
Sat.	19	Scunthorpe	Home	0—1	7,084
Sat.	26	(1) Southend	Home	1—0	8,797
Dec.					
Sat.	3	Oxford Utd.	Home	2—0	6,414
Sat.	10	Bristol R.	Away	3—0	8,227
Weds.	14	Torquay Utd.	Away	0—1	4,277
Sat.	17	Darlington	Home	2—0	6,640
Mon.	26	Torquay Utd.	Home	2—1	6,225
Sat.	31	Q.P.R.	Away	1—4	17,703
Jan. 1967					
Sat.	7	(2) Enfield	Away	4—2	7,623
Sat.	14	Swindon T.	Home	.. .. .	.. .. .
Sat.	21	Reading	Away	.. .. .	.. .. .
Sat.	28	(3) Liverpool	Home	.. .. .	.. .. .
Feb.					
Sat.	4	Doncaster R.	Home	.. .. .	.. .. .
Sat.	11	Mansfield T.	Away	.. .. .	.. .. .
Sat.	18	(4) Walsall	Home	.. .. .	.. .. .
Sat.	25	Middlesbro.	Away	.. .. .	.. .. .
Mar.					
Fri.	3	Swansea T.	Home	.. .. .	.. .. .
Sat.	11	(5) Walsall	Away	.. .. .	.. .. .
Sat.	18	Bournemouth	Away	.. .. .	.. .. .
Fri.	24	Brighton	Home	.. .. .	.. .. .
Sat.	25	Leyton Orient	Home	.. .. .	.. .. .
Mon.	27	Brighton	Away	.. .. .	.. .. .
Apr.					
Sat.	1	Gillingham	Away	.. .. .	.. .. .
Sat.	8	(6) Workington	Home	.. .. .	.. .. .
Wed.	12	Grimsby T.	Away	.. .. .	.. .. .
Fri.	14	Scunthorpe	Away	.. .. .	.. .. .
Sat.	22	Oldham	Home	.. .. .	.. .. .
Tues.	25	Grimsby T.	Home	.. .. .	.. .. .
Sat.	29	(S.F.) Oxford	Away	.. .. .	.. .. .
May					
Sat.	6	Bristol R.	Home	.. .. .	.. .. .
Tues.	9	Colchester U.	Home	.. .. .	.. .. .
Sat.	13	Oldham	Away	.. .. .	.. .. .
Sat.	20	Cup Final	.. .. .	.. .. .	.. .. .

## 2nd Team—THE LONDON MID-WEEK LEAGUE

Sept. 1966				F	A
Weds.	7	Aldershot	Away	4—1	.. .. .
Mon.	12	Leyton Orient	Away	0—4	.. .. .
Tues.	20	Colchester U.	Home	1—1	.. .. .
Oct.					
Tues.	11	Luton Town	Home	3—0	.. .. .
Weds.	19	Millwall	Away	1—2	.. .. .
Tues.	25	Q.P.R.	Home	0—1	.. .. .
Nov.					
Weds.	2	Southend U.	Away	5—3	.. .. .
Tues.	8	Charlton	Home	0—2	.. .. .
Tues.	15	Charlton	Away	0—6	.. .. .
Tues.	22	Aldershot	Home	3—3	.. .. .
Dec.					
Weds.	7	Colchester U.	Away	1—3	.. .. .
Weds.	21	Luton Town	Away	3—1	.. .. .
Jan. 1967					
Tues.	3	Millwall	Home	1—2	.. .. .
Tues.	17	Southend U.	Home	.. .. .	.. .. .
Tues.	24	Colchester U.	Home	.. .. .	.. .. .
Feb.					
Weds.	1	Millwall	Away	.. .. .	.. .. .
Tues.	7	Southend U.	Home	.. .. .	.. .. .
Tues.	14	Charlton	Away	.. .. .	.. .. .
Tues.	21	Luton Town	Home	.. .. .	.. .. .
Mar.					
Weds.	1	Leyton Orient	Away	.. .. .	.. .. .
Tues.	14	Aldershot	Home	.. .. .	.. .. .
Tues.	21	Q.P.R.	Away	.. .. .	.. .. .
Apr.					
Tues.	4	Q.P.R.	Home	.. .. .	.. .. .
Weds.	5	Aldershot	Away	.. .. .	.. .. .
Weds.	12	Colchester	Away	.. .. .	.. .. .
Tues.	18	Millwall	Home	.. .. .	.. .. .
Weds.	26	Southend U.	Away	.. .. .	.. .. .
May					
Tues.	2	Charlton	Home	.. .. .	.. .. .
Weds.	10	Luton Town	Away	.. .. .	.. .. .
Tues.	16	Leyton Orient	Home	.. .. .	.. .. .
Undated		Leyton Orient	Home	.. .. .	.. .. .
Undated		Q.P.R.	Away	.. .. .	.. .. .

© Football League Ltd., 1966

## 1st Team—FOOTBALL LEAGUE CUP

Aug.				F	A
Tues.	23	Reading (1)	Home	1—1	4,592
Mon.	30	Reading (1)	Away	0—1	5,600
		(Replay)			

## SOUTH-EAST COUNTIES LEAGUE

### Senior Division

				F	A
Aug.	20	Crystal P.	Home	2—4	.. .. .
	27	Luton Town	Away	3—2	.. .. .
Sept.	3	Fulham	Home	3—3	.. .. .
	10	Tottenham	Away	2—2	.. .. .
	17	Leyton Orient	Away	3—3	.. .. .
	24	Millwall (L.C.)	Away	1—3	.. .. .
Oct.	1	West Ham	Away	1—3	.. .. .
	8	Charlton	Away	2—2	.. .. .
	15	Millwall	Home	3—2	.. .. .
	22	Chelsea	Away	2—2	.. .. .
	29	Brighton	Home	5—0	.. .. .
Nov.	5	Millwall	Away	0—1	.. .. .
	12	Leyton Orient	Home	0—3	.. .. .
	19	Bexley Utd.	Away	2—3	.. .. .
	26	Bexley Utd.	Home	6—1	.. .. .
Dec.	3	Brighton	Away	5—1	.. .. .
	17	Q.P.R.	Away	2—2	.. .. .
	31	Q.P.R.	Home	1—0	.. .. .
Jan.	7	Ipswich	Home	1—5	.. .. .
	14	Brentford	Away	.. .. .	.. .. .





# **DOUBLE DIAMOND**

## ***THE BEER THE MEN DRINK***

This space is  
reserved for

### **STUDIO ONE**

**Rembrandt House  
Watford**

THE HANDYMAN'S SHOP  
**P. BECKFORD LTD.**

307 BALDWINS LANE  
CROXLEY GREEN

Telephone: Rickmansworth 75697

1 MONEYHILL PARADE  
RICKMANSWORTH

Telephone: Rickmansworth 73906

- Timber, Hardboard and Mouldings
- Ironmongery and Tools
- Domestic Hardware
- Garden Requisites
- Key Cutting
- Electrical Accessories
- Glass cut to size

Stockists of high - class Decorating  
Materials

Agents for Crown, Sanderson, Con-  
tinental and Shand Kydd Wallpapers

### **NEW CAR PARK AVAILABLE**

**2s. per match or Season Tickets  
for remainder of season £1 5s.**

**ENTER via WIGGENHALL ROAD  
and CARDIFF ROAD**

### **YOUR LUCKY NUMBER IS**

**Nº 1945**